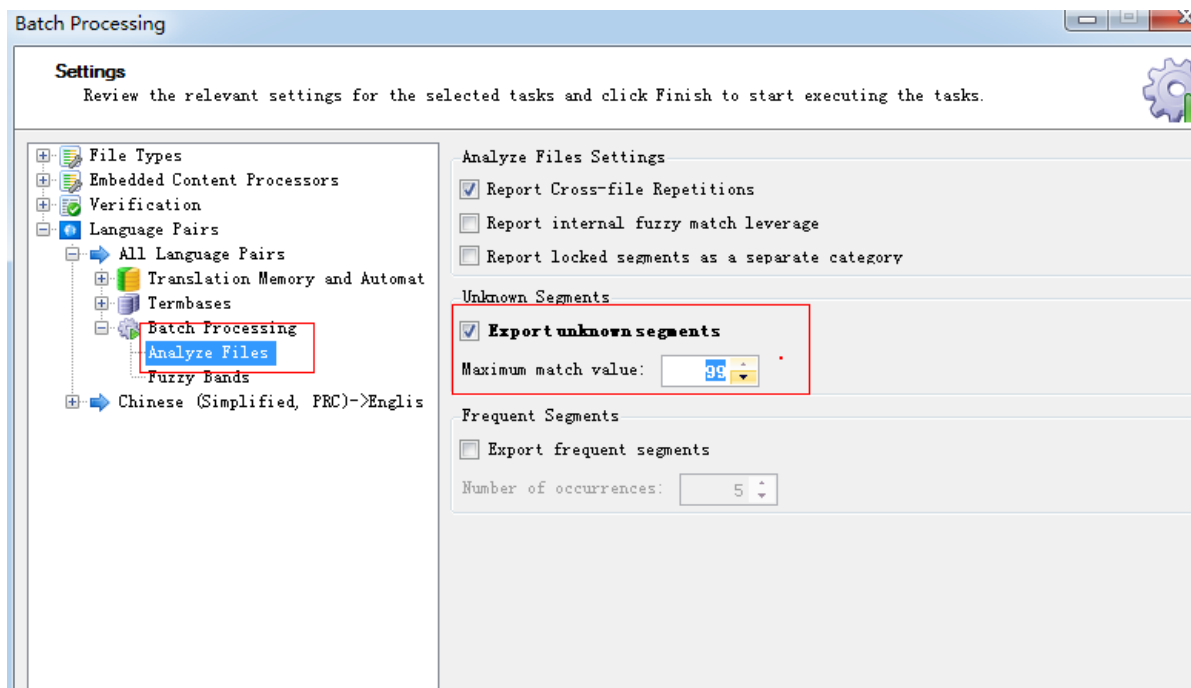
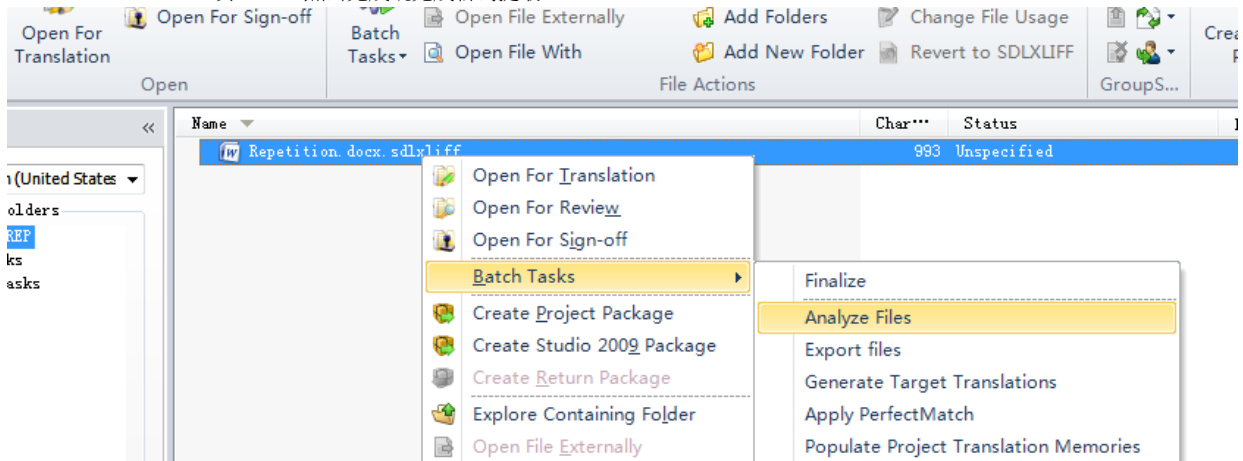
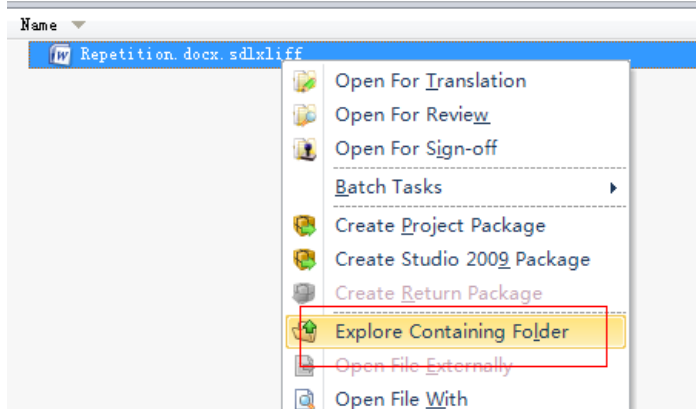


重复字处理

全选所有需要进行提取重复字的文件，点击 **Batch tasks - Analyze** - 自定义 **Analyze files** 选项，勾选 **Export unknown segments**，同时 **Maximum match value** 填上 99。点击完成既完成新词提取。




然后打开文件所在目录，找到 **exports** 文件夹，会找到一个名为 **UnknownSegments** 的 **xliff** 文件。翻译这个文件，然后导入到 **TM**，对之前的文件进行预翻译，所有均段均会完成翻译。



锁定不算字数

Batch Processing

Settings
Review the relevant settings for the selected tasks and click Finish to start executing the tasks.



- File Types
- Embedded Content Processors
- Verification
- Language Pairs
 - All Language Pairs
 - Translation Memory and Automat
 - Termbases
 - Batch Processing
 - Analyze Files**
 - Fuzzy Bands
 - Chinese (Simplified, PRC)->Englis

Analyze Files Settings

- Report Cross-file Repetitions
- Report internal fuzzy match leverage
- Report locked segments as a separate category**

Unknown Segments

- Export unknown segments**

Maximum match value:

Frequent Segments

- Export frequent segments

Number of occurrences: